



Wild Nocturnes

Jeanneration

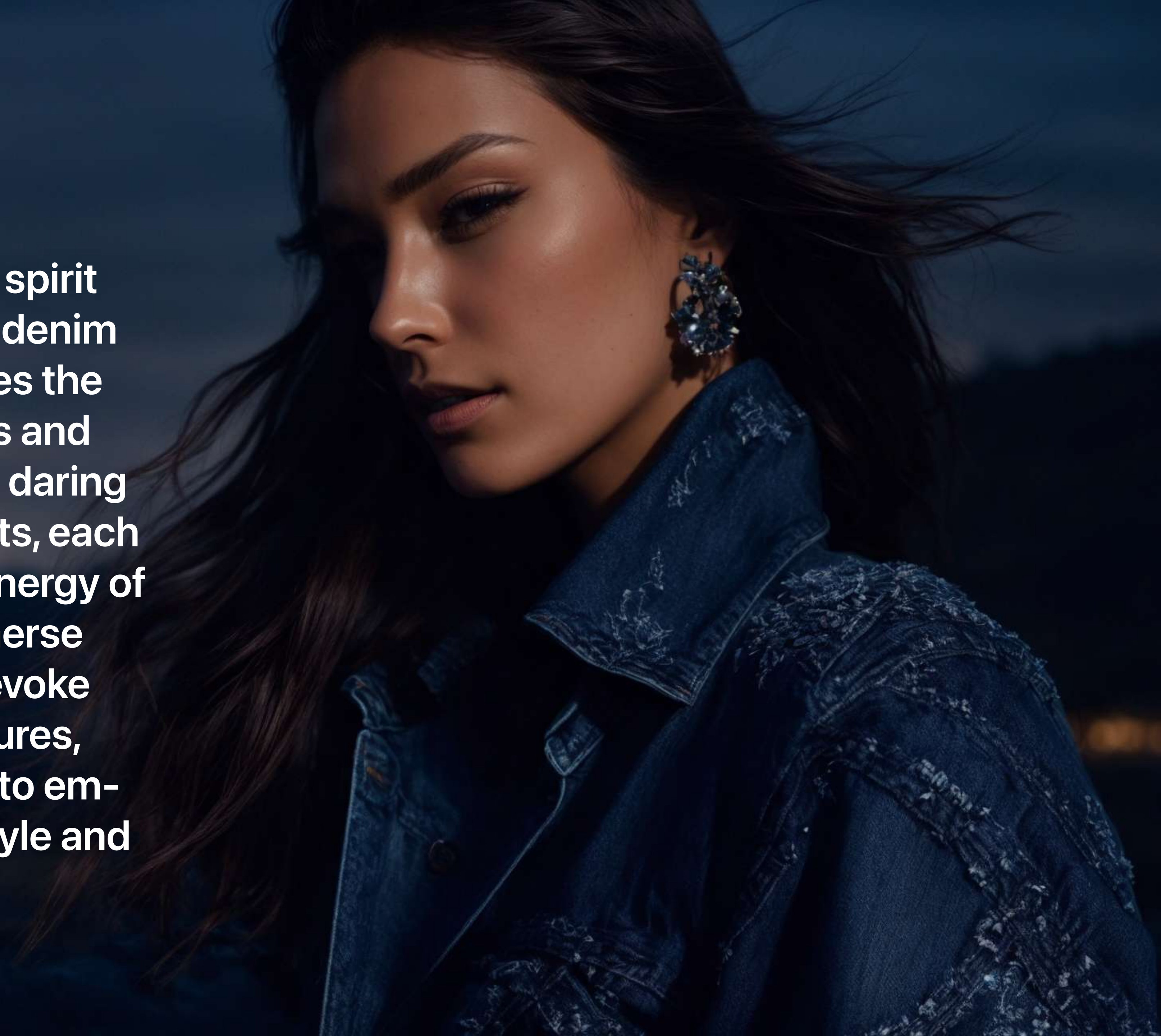
LAB




Unbridled Nights

┌ ┐
Jeaneration
LAB └

Unleash your adventurous spirit with our "Wild Nocturnes" denim collection. This line captures the essence of untamed nights and the allure of the dark. From daring cuts to bold embellishments, each piece resonates with the energy of nighttime exploration. Immerse yourself in garments that evoke the thrill of moonlit adventures, designed to empower you to embrace the unknown with style and confidence.



A fashion advertisement featuring two models in denim outfits. The models are standing in a dark, urban setting at night, illuminated by vibrant blue and purple neon lights. The model on the left is wearing a long-sleeved denim jacket and matching wide-leg trousers. The model on the right is wearing a denim jacket and matching wide-leg trousers. The background shows a blurred city street with a car and buildings. The text 'FIT: DENIM BLOCK' is overlaid in large, bold, white letters. The brand name 'Jeeneration LAB' is visible in the bottom right corner of the image area.

FIT: DENIM BLOCK

For nighttime glamor, Moonlit Serenade Block Design offers an eye-catching style with embroidery and stone details. This jacket and flare trouser set brings a new perspective to global trends and draws attention with its carefully crafted different forms.

Jeeneration
LAB

A woman with her hair in a high bun is sitting on the ground in a desert at night. She is wearing a blue denim outfit consisting of a long-sleeved top and a long, flowing skirt. The outfit features intricate embroidery and stone details. She is also wearing large, ornate earrings and a necklace. The background shows palm trees and a dark sky with a few stars. The text 'FIT: WILDERNESS CARGO' is overlaid on the right side of the image.

FIT: WILDERNESS CARGO

The maxi denim skirt is designed with carefully selected fits and details, combining elegance and freedom with embroidery and stone details, offering a sophisticated look. It has a skirt form that both reflects the elegant atmosphere of the night and provides comfort.

**Jeeneration
LAB**

FIT: CELESTIAL STRAIGHT

These slim jeans offer the perfect combination of elegance and style. The figure-hugging cut brings comfort as well as modern style. These trousers are more than just a piece of clothing, they are the epitome of elegance at all times.

Jeaneration
LAB

